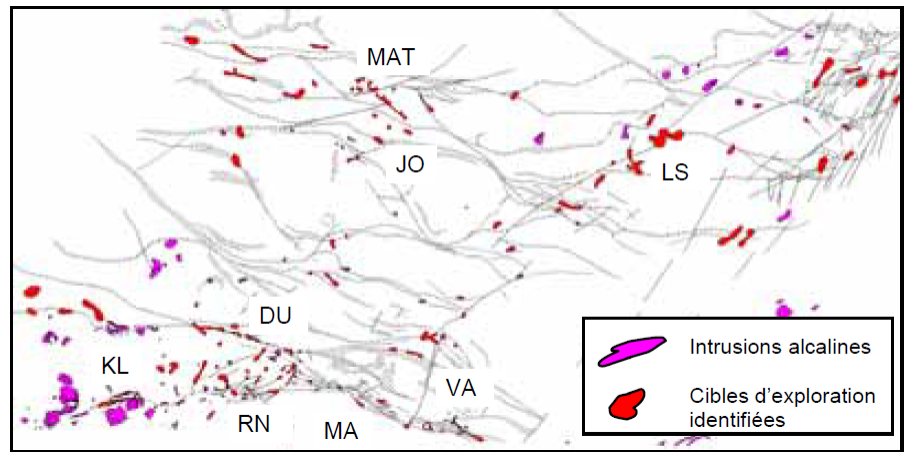


2007-6: Fertility of intrusions for Archean gold mineralisation

This project aimed to establish the characteristics of intrusions fertile in gold and to identify favourable intrusions in the Abitibi. From the outset, the project prioritised the study of small alkaline intrusions that are well-known for their association with gold mineralisation. After documenting gold-bearing alkaline systems including typical examples from around the world and the Abitibi, the project focused on the definition of favourable lithogeochemical parameters for gold-bearing alkaline intrusions, extracting criteria applicable in exploration and designing a test to be performed in a specific area of the Abitibi. The target area is on the Douay property belonging to the Vior mining exploration company, a member of CONSOREM.

Parameters favourable for gold were identified using principal component factor analysis on the Douay lithogeochemical database.

The variables used in the analysis correspond to data that was sufficiently abundant in company databases and in SIGÉOM for application on a regional scale or in other similar contexts. Major elements; metals Au, Cu and Zn; and trace elements Zr, Y, Cr, Ba and Sr were the variables used. The factors that correlated spatially with gold at Douay were applied to the entire territory of the Abitibi Subprovince, which



Regional exploration targets identified by the use of factors for gold-bearing alkaline intrusions

generated close to 150 new exploration targets (figure attached).

Project 2007-6: Summary	
Objectives	<ul style="list-style-type: none"> • To establish the characteristics of fertile intrusions (small alkaline intrusions). • To identify fertile intrusions in the Abitibi (gold-bearing alkaline intrusions).
Results	<ul style="list-style-type: none"> • Close to 150 regional exploration targets were defined in the Abitibi.
Innovations	<ul style="list-style-type: none"> • Targeting tool applicable in other mineralisation contexts.