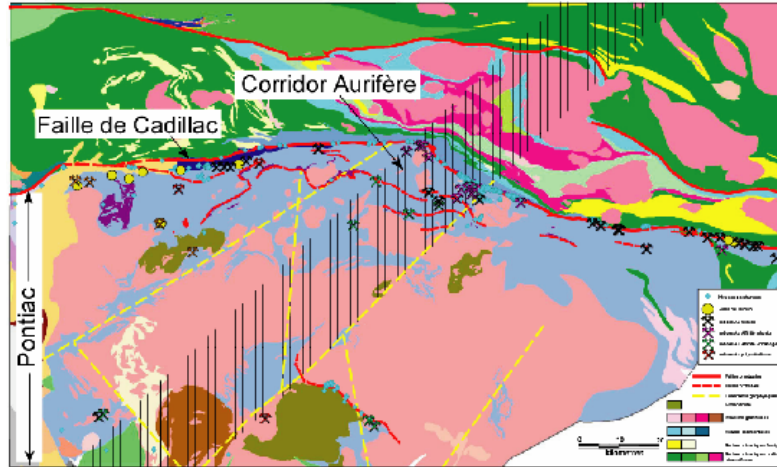


## Project 2006-8: Gold mineralisation in a sedimentary environment - A new territory: The Pontiac Group

Project 2006-8 focuses on the gold potential of the Pontiac Group located south of the Abitibi Subprovince. This sedimentary environment adjacent to the very prolific Cadillac-Larder Lake Fault Zone in the Abitibi is altogether little known despite the fact that it is of interest. The interest is mainly due to the discovery of the Éléonore deposit in a sedimentary environment in the James Bay region.

Following a literature review to document similar contexts in the world, the project highlighted favourable criteria for gold mineralisation. Among them should be noted probable faults that limit the slivers of ultramafic rocks within turbidite sequences, as well as a new NE corridor identified in project 2006-6 and which includes the mineralisations of the Malartic area.



*Integration of the Pontiac data and the identification of a new NE corridor of interest for gold mineralisation.*

<b>Summary: Project 2006-8</b>	
<b>Objectives</b>	<ul style="list-style-type: none"> <li>To evaluate the gold potential of the Pontiac in the light of new gold discoveries in similar high-grade metamorphic metasedimentary terrains.</li> </ul>
<b>Results</b>	<ul style="list-style-type: none"> <li>Several examples of gold mineralisation in similar contexts in the world;</li> <li>Important potential for gold mineralisation in the Pontiac:                             <ul style="list-style-type: none"> <li>- Longitudinal faults along ultramafic slivers;</li> <li>- New NE corridor.</li> </ul> </li> </ul>
<b>Note</b>	<ul style="list-style-type: none"> <li>The subject of gold in sedimentary environments will be further studied in 2007-2008.</li> </ul>